



Ostoh Valve System

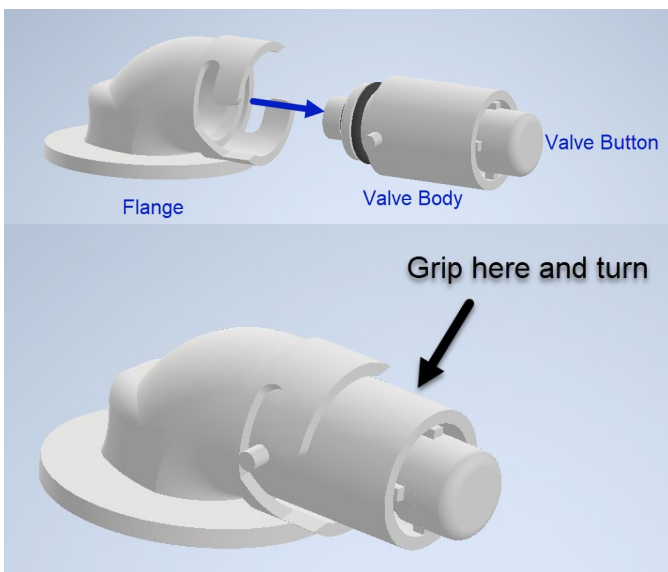
Instructions for use

The Ostoh Valve System is intended to allow the release of gas from an ostomy bag by pressing the release button on the Ostoh Valve System.

Precautions

- Do not press the release valve if there is waste in or near the Ostoh Valve System. Only attempt to release gas when waste is resting at the bottom of the ostomy bag.
- The Ostoh Valve System works only with ostomy bags that have a clear plastic face. It will not work with cloth ostomy bags.
- Not Intended for use in contact sports or any situation where impact may occur.
- Keep unused items inside white packing bag when not in use.
- Caution! Small Parts! Choking Hazard! - Not for use with children under the age of 13

Instructions for use:



1. Identify the area where the Ostoh Valve System will be attached.

We recommend the top left or right of your ostomy pouch, on the front of the pouch.



2. If your bag has a cloth overlay or inspection window then cut a circle in the cloth big enough for the Ostoh Valve System to fit or remove the section of cloth entirely.



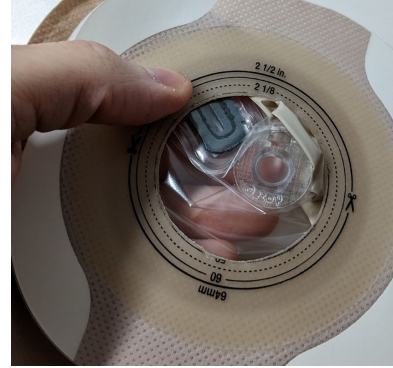
3. Wipe the area with 91% Isopropyl Alcohol and let it dry.



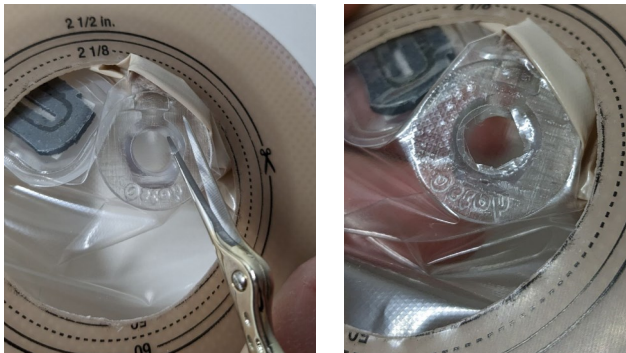
4. Remove the adhesive backing from the Ostoh Valve System and stick it to the pouch. Be sure that it sits flat on the pouch and there are no wrinkles. Press the Ostoh Valve System firmly to the ostomy bag.



5. From the rear side of the pouch, flip the bag inside out so you can see the back of the Ostoh Valve System. If you are using a one piece bag system, you may need to cut the hole for your stoma first.



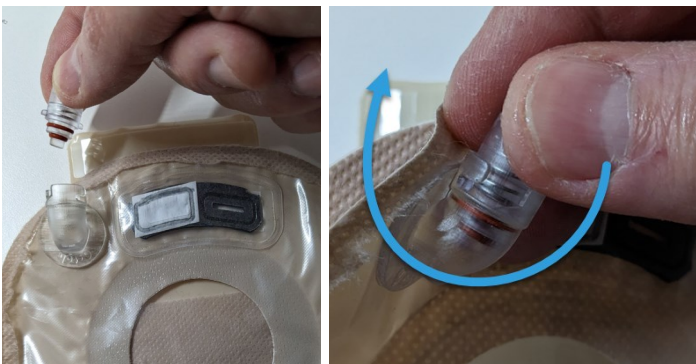
6. Cut a hole in the ostomy pouch behind the Ostoh Valve System. Cut out the entire inside circle.



7. Let the bag sit for 24 hours before use. This will ensure the Ostoh Valve System makes a strong bond to the ostomy bag.



8. Insert the Valve into the Flange and twist it to the right to lock it into place.



9. Press the Valve Button to release gas.



After use: Dispose of the ostomy bag as normal

Note: Should irritation occur, discontinue use and consult a healthcare professional.

If any part of the device breaks, discontinue use, change your ostomy bag, and use a new device.